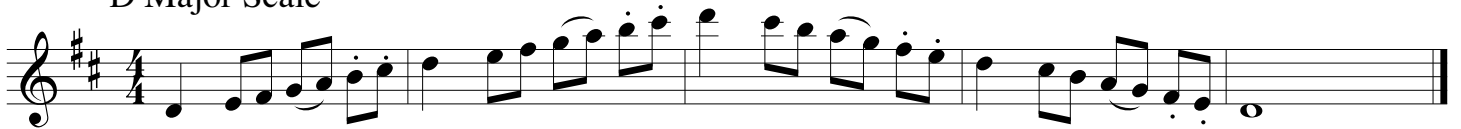


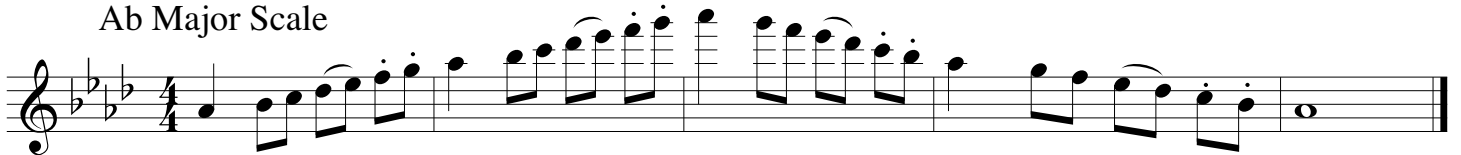
MBDA 6-8 State Honor Band Flute Scales

♩ = 120

D Major Scale



A \flat Major Scale



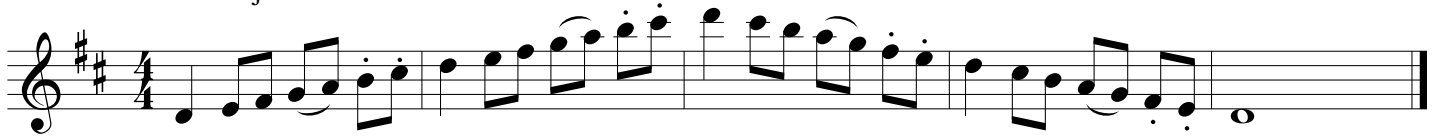
Chromatic Scale



MBDA 6-8 HONOR BAND OBOE SCALES

$\text{♩} = 120$

D Major Scale



A \flat Major Scale



Chromatic Scale



MBDA 6-8 Honor Band Clarinet Scales

♩ = 120

C



D



Chromatic

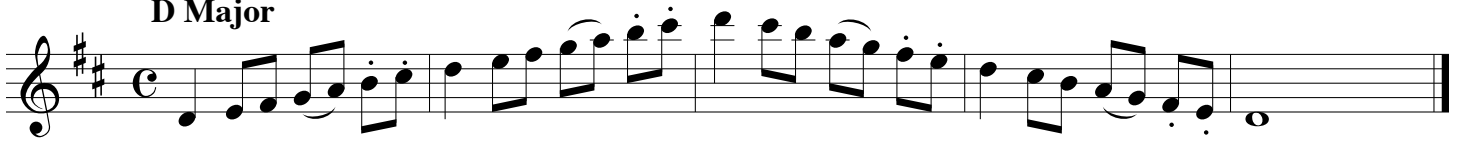


MBDA 6-8 Honor Band

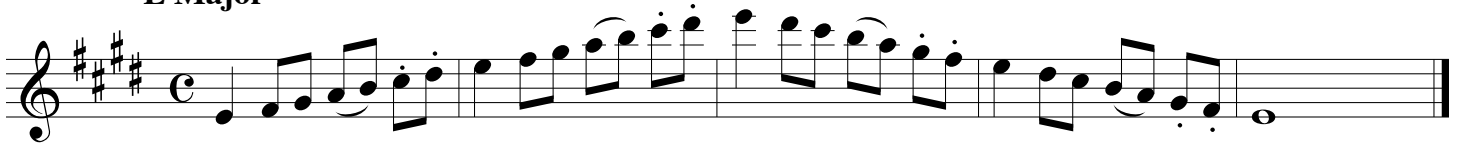
Alto and Tenor Sax Scales

♩ = 120

D Major



E Major



Chromatic



* - alternate fingering

MBDA 6-8 Honor Band

Bari Sax Scales

♩ = 120

C Major



Musical notation for the C Major scale in treble clef, common time. The scale is written as a single line of music with a treble clef, a common time signature, and a key signature of one flat (Bb). The scale consists of eight measures of music, each containing a half note followed by a quarter note, with a final whole note at the end. The notes are: C4, D4, E4, F4, G4, A4, B4, C5, B4, A4, G4, F4, E4, D4, C4.

Bb Major



Musical notation for the Bb Major scale in treble clef, common time. The scale is written as a single line of music with a treble clef, a common time signature, and a key signature of two flats (Bb, Eb). The scale consists of eight measures of music, each containing a half note followed by a quarter note, with a final whole note at the end. The notes are: Bb3, C4, D4, Eb4, F4, G4, Ab4, Bb4, Ab4, G4, F4, Eb4, D4, C4, Bb3.

Chromatic



Musical notation for the ascending chromatic scale in treble clef, common time. The scale is written as a single line of music with a treble clef, a common time signature, and a key signature of one flat (Bb). The scale consists of eight measures of music, each containing a half note followed by a quarter note, with a final whole note at the end. The notes are: Bb3, C4, C#4, D4, D#4, E4, E#4, F4, F#4, G4, G#4, Ab4, Ab#4, Bb4, Bb4.



Musical notation for the descending chromatic scale in treble clef, common time. The scale is written as a single line of music with a treble clef, a common time signature, and a key signature of one flat (Bb). The scale consists of eight measures of music, each containing a half note followed by a quarter note, with a final whole note at the end. The notes are: Bb4, Ab4, Ab#4, G4, G#4, F4, F#4, E4, E#4, D4, D#4, C4, C#4, Bb3, Bb3.

MBDA 6-8 HONOR BAND BASSOON SCALES

♩ = 120

F



Bb



Chromatic



MBDA 6-8 HONOR BAND HORN SCALES

♩ = 120

Eb Major

Musical notation for the Eb Major scale in 4/4 time. The scale is written on a single staff in treble clef. It begins with a key signature of two flats (Bb and Eb) and a 4/4 time signature. The scale consists of eight measures: four measures of the ascending scale and four measures of the descending scale. The notes are Eb, F, G, Ab, Bb, C, D, Eb. The piece concludes with a whole note Eb chord.

G Major

Musical notation for the G Major scale in 4/4 time. The scale is written on a single staff in treble clef. It begins with a key signature of one sharp (F#) and a 4/4 time signature. The scale consists of eight measures: four measures of the ascending scale and four measures of the descending scale. The notes are G, A, B, C, D, E, F#, G. The piece concludes with a whole note G chord.

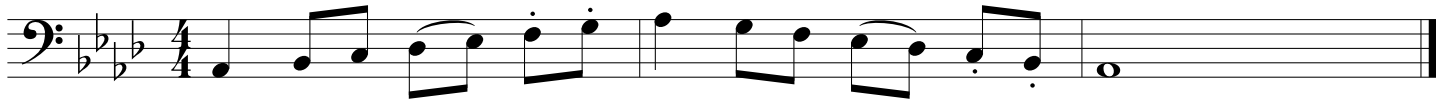
Chromatic

Musical notation for the Chromatic scale in 4/4 time. The scale is written on a single staff in treble clef. It begins with a key signature of two flats (Bb and Eb) and a 4/4 time signature. The scale consists of eight measures: four measures of the ascending chromatic scale and four measures of the descending chromatic scale. The notes are Eb, E, F, F#, G, G#, Ab, A, Bb, B, C, C#, D, D#, Eb. The piece concludes with a whole note Eb chord.

MBDA 6-8 HONOR BAND TROMBONE / BARITONE SCALES

♩ = 120

Ab



G



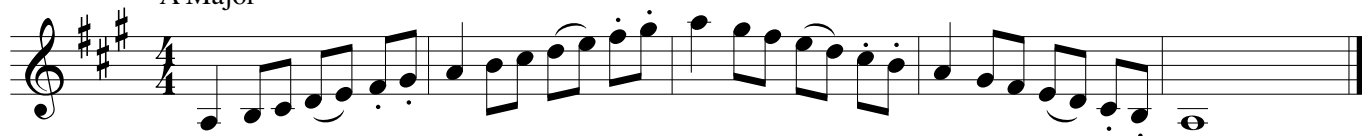
Chromatic



MBDA 6-8 HONOR BAND EUPHONIUM T. C. SCALES

♩ = 120

A Major



Musical notation for the A Major scale in 4/4 time. The key signature has three sharps (F#, C#, G#). The scale is written on a single staff with a treble clef. It consists of an ascending eighth-note scale followed by a descending eighth-note scale, ending on a whole note A.

Bb Major



Musical notation for the Bb Major scale in 4/4 time. The key signature has two flats (Bb, Eb). The scale is written on a single staff with a treble clef. It consists of an ascending eighth-note scale followed by a descending eighth-note scale, ending on a whole note Bb.

Chromatic



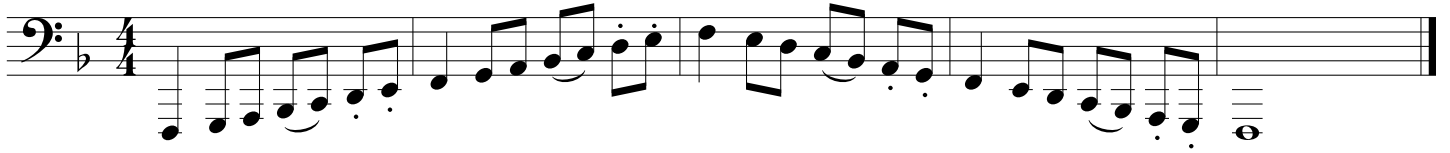
Musical notation for the chromatic scale in 4/4 time. The key signature has one sharp (F#). The scale is written on a single staff with a treble clef. It consists of an ascending eighth-note chromatic scale followed by a descending eighth-note chromatic scale, ending on a whole note F#.



Musical notation for the chromatic scale in 4/4 time. The key signature has one sharp (F#). The scale is written on a single staff with a treble clef. It consists of a descending eighth-note chromatic scale followed by an ascending eighth-note chromatic scale, ending on a whole note F#.

MBDA HONOR BAND TUBA SCALES

F $\bullet = 120$



D



Chromatic

