

# MBDA 9-10 Honor Band Flute Scales

♩ = 120

## E Major Scale



Musical notation for the E Major Scale in 4/4 time. The key signature has three sharps (F#, C#, G#). The scale is written on a single staff, starting on E4 and ending on E5. The notation includes slurs and accents to indicate phrasing and articulation.

## A Major Scale



Musical notation for the A Major Scale in 4/4 time. The key signature has three sharps (F#, C#, G#). The scale is written on a single staff, starting on A4 and ending on A5. The notation includes slurs and accents to indicate phrasing and articulation.

## Chromatic Scale



Musical notation for the Chromatic Scale in 4/4 time. The scale is written on a single staff, starting on E4 and ending on E5. The notation includes slurs and accents to indicate phrasing and articulation. The scale is divided into two parts: the first part covers the ascending chromatic scale from E4 to E5, and the second part covers the descending chromatic scale from E5 to E4.

# MBDA 9-10 Honor Band Oboe Scales





# MBDA 9-10 Honor Band Bass Clarinet Scales

F



Ab

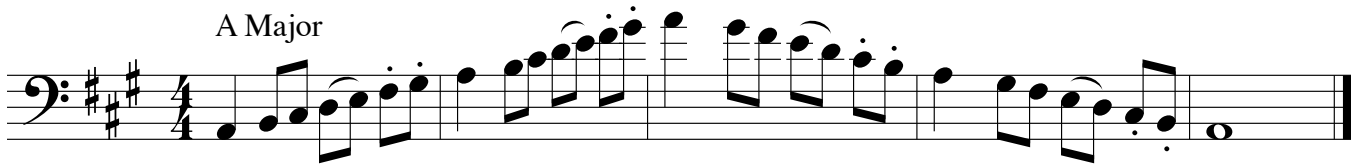


Chromatic

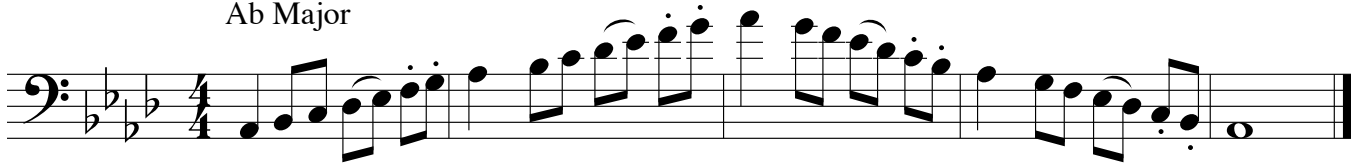


# MBDA 9-10 Honor Band Bassoon Scales

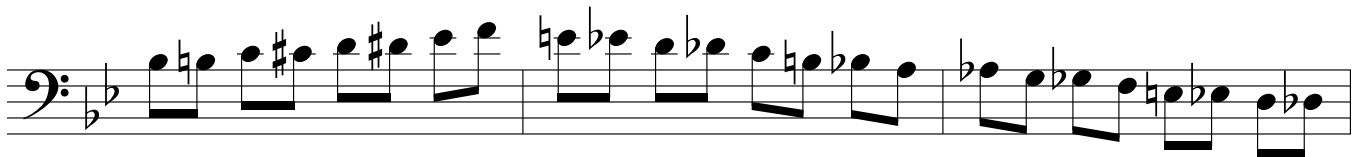
A Major



A $\flat$  Major



Chromatic



# MBDA 9-10 Honor Band Alto & Tenor Sax Scales

♩ = 120

F Major




E Major



Chromatic



# MBDA 9-10 Honor Band Bari Sax Scales

 = 120

**F Major**



Musical staff for F Major scale in C major key signature. The scale is written in treble clef with a common time signature. It consists of two lines of music. The first line contains the ascending scale: F4, G4, A4, Bb4, C5, Bb4, A4, G4, F4. The second line contains the descending scale: E4, D4, C4, Bb3, A3, G3, F3, E2, D2, C2, Bb1, A1, G1, F1.

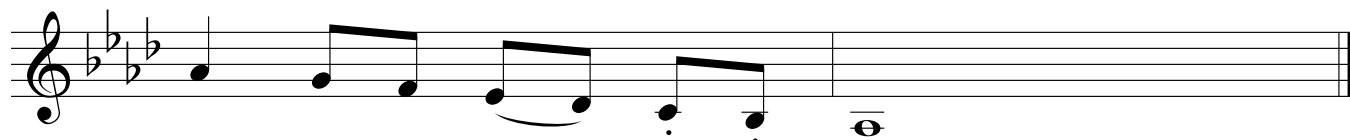
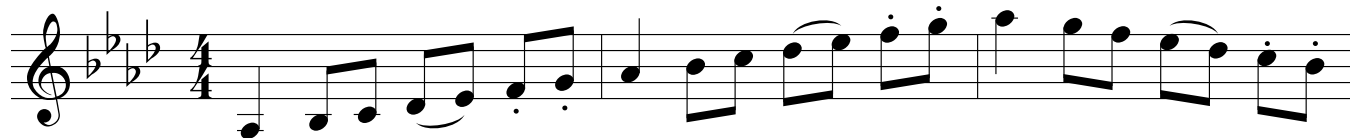
**Bb Major**



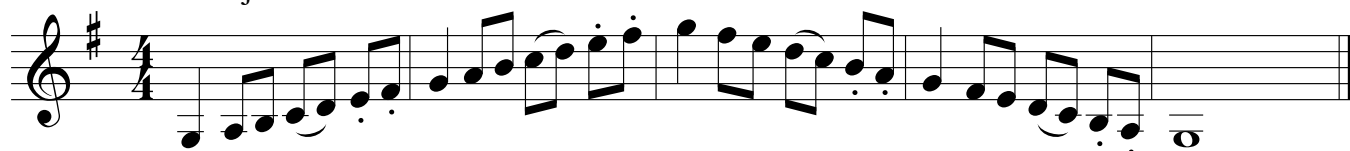
Musical staff for Bb Major scale in Bb major key signature. The scale is written in treble clef with a common time signature. It consists of two lines of music. The first line contains the ascending scale: Bb4, C5, D5, Eb5, F5, Eb5, D5, C5, Bb4. The second line contains the descending scale: Ab4, G4, F4, Eb4, D4, C4, Bb3, Ab3, G3, F3, Eb3, D3, C3, Bb2, Ab2, G2, F2, Eb2, D2, C2, Bb1, Ab1, G1, F1, Eb1, D1, C1, Bb0, Ab0, G0, F0, Eb0, D0, C0, Bb-1, Ab-1, G-1, F-1, Eb-1, D-1, C-1, Bb-2, Ab-2, G-2, F-2, Eb-2, D-2, C-2, Bb-3, Ab-3, G-3, F-3, Eb-3, D-3, C-3, Bb-4, Ab-4, G-4, F-4, Eb-4, D-4, C-4, Bb-5, Ab-5, G-5, F-5, Eb-5, D-5, C-5, Bb-6, Ab-6, G-6, F-6, Eb-6, D-6, C-6, Bb-7, Ab-7, G-7, F-7, Eb-7, D-7, C-7, Bb-8, Ab-8, G-8, F-8, Eb-8, D-8, C-8, Bb-9, Ab-9, G-9, F-9, Eb-9, D-9, C-9, Bb-10, Ab-10, G-10, F-10, Eb-10, D-10, C-10, Bb-11, Ab-11, G-11, F-11, Eb-11, D-11, C-11, Bb-12, Ab-12, G-12, F-12, Eb-12, D-12, C-12, Bb-13, Ab-13, G-13, F-13, Eb-13, D-13, C-13, Bb-14, Ab-14, G-14, F-14, Eb-14, D-14, C-14, Bb-15, Ab-15, G-15, F-15, Eb-15, D-15, C-15, Bb-16, Ab-16, G-16, F-16, Eb-16, D-16, C-16, Bb-17, Ab-17, G-17, F-17, Eb-17, D-17, C-17, Bb-18, Ab-18, G-18, F-18, Eb-18, D-18, C-18, Bb-19, Ab-19, G-19, F-19, Eb-19, D-19, C-19, Bb-20, Ab-20, G-20, F-20, Eb-20, D-20, C-20, Bb-21, Ab-21, G-21, F-21, Eb-21, D-21, C-21, Bb-22, Ab-22, G-22, F-22, Eb-22, D-22, C-22, Bb-23, Ab-23, G-23, F-23, Eb-23, D-23, C-23, Bb-24, Ab-24, G-24, F-24, Eb-24, D-24, C-24, Bb-25, Ab-25, G-25, F-25, Eb-25, D-25, C-25, Bb-26, Ab-26, G-26, F-26, Eb-26, D-26, C-26, Bb-27, Ab-27, G-27, F-27, Eb-27, D-27, C-27, Bb-28, Ab-28, G-28, F-28, Eb-28, D-28, C-28, Bb-29, Ab-29, G-29, F-29, Eb-29, D-29, C-29, Bb-30, Ab-30, G-30, F-30, Eb-30, D-30, C-30, Bb-31, Ab-31, G-31, F-31, Eb-31, D-31, C-31, Bb-32, Ab-32, G-32, F-32, Eb-32, D-32, C-32, Bb-33, Ab-33, G-33, F-33, Eb-33, D-33, C-33, Bb-34, Ab-34, G-34, F-34, Eb-34, D-34, C-34, Bb-35, Ab-35, G-35, F-35, Eb-35, D-35, C-35, Bb-36, Ab-36, G-36, F-36, Eb-36, D-36, C-36, Bb-37, Ab-37, G-37, F-37, Eb-37, D-37, C-37, Bb-38, Ab-38, G-38, F-38, Eb-38, D-38, C-38, Bb-39, Ab-39, G-39, F-39, Eb-39, D-39, C-39, Bb-40, Ab-40, G-40, F-40, Eb-40, D-40, C-40, Bb-41, Ab-41, G-41, F-41, Eb-41, D-41, C-41, Bb-42, Ab-42, G-42, F-42, Eb-42, D-42, C-42, Bb-43, Ab-43, G-43, F-43, Eb-43, D-43, C-43, Bb-44, Ab-44, G-44, F-44, Eb-44, D-44, C-44, Bb-45, Ab-45, G-45, F-45, Eb-45, D-45, C-45, Bb-46, Ab-46, G-46, F-46, Eb-46, D-46, C-46, Bb-47, Ab-47, G-47, F-47, Eb-47, D-47, C-47, Bb-48, Ab-48, G-48, F-48, Eb-48, D-48, C-48, Bb-49, Ab-49, G-49, F-49, Eb-49, D-49, C-49, Bb-50, Ab-50, G-50, F-50, Eb-50, D-50, C-50, Bb-51, Ab-51, G-51, F-51, Eb-51, D-51, C-51, Bb-52, Ab-52, G-52, F-52, Eb-52, D-52, C-52, Bb-53, Ab-53, G-53, F-53, Eb-53, D-53, C-53, Bb-54, Ab-54, G-54, F-54, Eb-54, D-54, C-54, Bb-55, Ab-55, G-55, F-55, Eb-55, D-55, C-55, Bb-56, Ab-56, G-56, F-56, Eb-56, D-56, C-56, Bb-57, Ab-57, G-57, F-57, Eb-57, D-57, C-57, Bb-58, Ab-58, G-58, F-58, Eb-58, D-58, C-58, Bb-59, Ab-59, G-59, F-59, Eb-59, D-59, C-59, Bb-60, Ab-60, G-60, F-60, Eb-60, D-60, C-60, Bb-61, Ab-61, G-61, F-61, Eb-61, D-61, C-61, Bb-62, Ab-62, G-62, F-62, Eb-62, D-62, C-62, Bb-63, Ab-63, G-63, F-63, Eb-63, D-63, C-63, Bb-64, Ab-64, G-64, F-64, Eb-64, D-64, C-64, Bb-65, Ab-65, G-65, F-65, Eb-65, D-65, C-65, Bb-66, Ab-66, G-66, F-66, Eb-66, D-66, C-66, Bb-67, Ab-67, G-67, F-67, Eb-67, D-67, C-67, Bb-68, Ab-68, G-68, F-68, Eb-68, D-68, C-68, Bb-69, Ab-69, G-69, F-69, Eb-69, D-69, C-69, Bb-70, Ab-70, G-70, F-70, Eb-70, D-70, C-70, Bb-71, Ab-71, G-71, F-71, Eb-71, D-71, C-71, Bb-72, Ab-72, G-72, F-72, Eb-72, D-72, C-72, Bb-73, Ab-73, G-73, F-73, Eb-73, D-73, C-73, Bb-74, Ab-74, G-74, F-74, Eb-74, D-74, C-74, Bb-75, Ab-75, G-75, F-75, Eb-75, D-75, C-75, Bb-76, Ab-76, G-76, F-76, Eb-76, D-76, C-76, Bb-77, Ab-77, G-77, F-77, Eb-77, D-77, C-77, Bb-78, Ab-78, G-78, F-78, Eb-78, D-78, C-78, Bb-79, Ab-79, G-79, F-79, Eb-79, D-79, C-79, Bb-80, Ab-80, G-80, F-80, Eb-80, D-80, C-80, Bb-81, Ab-81, G-81, F-81, Eb-81, D-81, C-81, Bb-82, Ab-82, G-82, F-82, Eb-82, D-82, C-82, Bb-83, Ab-83, G-83, F-83, Eb-83, D-83, C-83, Bb-84, Ab-84, G-84, F-84, Eb-84, D-84, C-84, Bb-85, Ab-85, G-85, F-85, Eb-85, D-85, C-85, Bb-86, Ab-86, G-86, F-86, Eb-86, D-86, C-86, Bb-87, Ab-87, G-87, F-87, Eb-87, D-87, C-87, Bb-88, Ab-88, G-88, F-88, Eb-88, D-88, C-88, Bb-89, Ab-89, G-89, F-89, Eb-89, D-89, C-89, Bb-90, Ab-90, G-90, F-90, Eb-90, D-90, C-90, Bb-91, Ab-91, G-91, F-91, Eb-91, D-91, C-91, Bb-92, Ab-92, G-92, F-92, Eb-92, D-92, C-92, Bb-93, Ab-93, G-93, F-93, Eb-93, D-93, C-93, Bb-94, Ab-94, G-94, F-94, Eb-94, D-94, C-94, Bb-95, Ab-95, G-95, F-95, Eb-95, D-95, C-95, Bb-96, Ab-96, G-96, F-96, Eb-96, D-96, C-96, Bb-97, Ab-97, G-97, F-97, Eb-97, D-97, C-97, Bb-98, Ab-98, G-98, F-98, Eb-98, D-98, C-98, Bb-99, Ab-99, G-99, F-99, Eb-99, D-99, C-99, Bb-100, Ab-100, G-100, F-100, Eb-100, D-100, C-100, Bb-101, Ab-101, G-101, F-101, Eb-101, D-101, C-101, Bb-102, Ab-102, G-102, F-102, Eb-102, D-102, C-102, Bb-103, Ab-103, G-103, F-103, Eb-103, D-103, C-103, Bb-104, Ab-104, G-104, F-104, Eb-104, D-104, C-104, Bb-105, Ab-105, G-105, F-105, Eb-105, D-105, C-105, Bb-106, Ab-106, G-106, F-106, Eb-106, D-106, C-106, Bb-107, Ab-107, G-107, F-107, Eb-107, D-107, C-107, Bb-108, Ab-108, G-108, F-108, Eb-108, D-108, C-108, Bb-109, Ab-109, G-109, F-109, Eb-109, D-109, C-109, Bb-110, Ab-110, G-110, F-110, Eb-110, D-110, C-110, Bb-111, Ab-111, G-111, F-111, Eb-111, D-111, C-111, Bb-112, Ab-112, G-112, F-112, Eb-112, D-112, C-112, Bb-113, Ab-113, G-113, F-113, Eb-113, D-113, C-113, Bb-114, Ab-114, G-114, F-114, Eb-114, D-114, C-114, Bb-115, Ab-115, G-115, F-115, Eb-115, D-115, C-115, Bb-116, Ab-116, G-116, F-116, Eb-116, D-116, C-116, Bb-117, Ab-117, G-117, F-117, Eb-117, D-117, C-117, Bb-118, Ab-118, G-118, F-118, Eb-118, D-118, C-118, Bb-119, Ab-119, G-119, F-119, Eb-119, D-119, C-119, Bb-120, Ab-120, G-120, F-120, Eb-120, D-120, C-120, Bb-121, Ab-121, G-121, F-121, Eb-121, D-121, C-121, Bb-122, Ab-122, G-122, F-122, Eb-122, D-122, C-122, Bb-123, Ab-123, G-123, F-123, Eb-123, D-123, C-123, Bb-124, Ab-124, G-124, F-124, Eb-124, D-124, C-124, Bb-125, Ab-125, G-125, F-125, Eb-125, D-125, C-125, Bb-126, Ab-126, G-126, F-126, Eb-126, D-126, C-126, Bb-127, Ab-127, G-127, F-127, Eb-127, D-127, C-127, Bb-128, Ab-128, G-128, F-128, Eb-128, D-128, C-128, Bb-129, Ab-129, G-129, F-129, Eb-129, D-129, C-129, Bb-130, Ab-130, G-130, F-130, Eb-130, D-130, C-130, Bb-131, Ab-131, G-131, F-131, Eb-131, D-131, C-131, Bb-132, Ab-132, G-132, F-132, Eb-132, D-132, C-132, Bb-133, Ab-133, G-133, F-133, Eb-133, D-133, C-133, Bb-134, Ab-134, G-134, F-134, Eb-134, D-134, C-134, Bb-135, Ab-135, G-135, F-135, Eb-135, D-135, C-135, Bb-136, Ab-136, G-136, F-136, Eb-136, D-136, C-136, Bb-137, Ab-137, G-137, F-137, Eb-137, D-137, C-137, Bb-138, Ab-138, G-138, F-138, Eb-138, D-138, C-138, Bb-139, Ab-139, G-139, F-139, Eb-139, D-139, C-139, Bb-140, Ab-140, G-140, F-140, Eb-140, D-140, C-140, Bb-141, Ab-141, G-141, F-141, Eb-141, D-141, C-141, Bb-142, Ab-142, G-142, F-142, Eb-142, D-142, C-142, Bb-143, Ab-143, G-143, F-143, Eb-143, D-143, C-143, Bb-144, Ab-144, G-144, F-144, Eb-144, D-144, C-144, Bb-145, Ab-145, G-145, F-145, Eb-145, D-145, C-145, Bb-146, Ab-146, G-146, F-146, Eb-146, D-146, C-146, Bb-147, Ab-147, G-147, F-147, Eb-147, D-147, C-147, Bb-148, Ab-148, G-148, F-148, Eb-148, D-148, C-148, Bb-149, Ab-149, G-149, F-149, Eb-149, D-149, C-149, Bb-150, Ab-150, G-150, F-150, Eb-150, D-150, C-150, Bb-151, Ab-151, G-151, F-151, Eb-151, D-151, C-151, Bb-152, Ab-152, G-152, F-152, Eb-152, D-152, C-152, Bb-153, Ab-153, G-153, F-153, Eb-153, D-153, C-153, Bb-154, Ab-154, G-154, F-154, Eb-154, D-154, C-154, Bb-155, Ab-155, G-155, F-155, Eb-155, D-155, C-155, Bb-156, Ab-156, G-156, F-156, Eb-156, D-156, C-156, Bb-157, Ab-157, G-157, F-157, Eb-157, D-157, C-157, Bb-158, Ab-158, G-158, F-158, Eb-158, D-158, C-158, Bb-159, Ab-159, G-159, F-159, Eb-159, D-159, C-159, Bb-160, Ab-160, G-160, F-160, Eb-160, D-160, C-160, Bb-161, Ab-161, G-161, F-161, Eb-161, D-161, C-161, Bb-162, Ab-162, G-162, F-162, Eb-162, D-162, C-162, Bb-163, Ab-163, G-163, F-163, Eb-163, D-163, C-163, Bb-164, Ab-164, G-164, F-164, Eb-164, D-164, C-164, Bb-165, Ab-165, G-165, F-165, Eb-165, D-165, C-165, Bb-166, Ab-166, G-166, F-166, Eb-166, D-166, C-166, Bb-167, Ab-167, G-167, F-167, Eb-167, D-167, C-167, Bb-168, Ab-168, G-168, F-168, Eb-168, D-168, C-168, Bb-169, Ab-169, G-169, F-169, Eb-169, D-169, C-169, Bb-170, Ab-170, G-170, F-170, Eb-170, D-170, C-170, Bb-171, Ab-171, G-171, F-171, Eb-171, D-171, C-171, Bb-172, Ab-172, G-172, F-172, Eb-172, D-172, C-172, Bb-173, Ab-173, G-173, F-173, Eb-173, D-173, C-173, Bb-174, Ab-174, G-174, F-174, Eb-174, D-174, C-174, Bb-175, Ab-175, G-175, F-175, Eb-175, D-175, C-175, Bb-176, Ab-176, G-176, F-176, Eb-176, D-176, C-176, Bb-177, Ab-177, G-177, F-177, Eb-177, D-177, C-177, Bb-178, Ab-178, G-178, F-178, Eb-178, D-178, C-178, Bb-179, Ab-179, G-179, F-179, Eb-179, D-179, C-179, Bb-180, Ab-180, G-180, F-180, Eb-180, D-180, C-180, Bb-181, Ab-181, G-181, F-181, Eb-181, D-181, C-181, Bb-182, Ab-182, G-182, F-182, Eb-182, D-182, C-182, Bb-183, Ab-183, G-183, F-183, Eb-183, D-183, C-183, Bb-184, Ab-184, G-184, F-184, Eb-184, D-184, C-184, Bb-185, Ab-185, G-185, F-185, Eb-185, D-185, C-185, Bb-186, Ab-186, G-186, F-186, Eb-186, D-186, C-186, Bb-187, Ab-187, G-187, F-187, Eb-187, D-187, C-187, Bb-188, Ab-188, G-188, F-188, Eb-188, D-188, C-188, Bb-189, Ab-189, G-189, F-189, Eb-189, D-189, C-189, Bb-190, Ab-190, G-190, F-190, Eb-190, D-190, C-190, Bb-191, Ab-191, G-191, F-191, Eb-191, D-191, C-191, Bb-192, Ab-192, G-192, F-192, Eb-192, D-192, C-192, Bb-193, Ab-193, G-193, F-193, Eb-193, D-193, C-193, Bb-194, Ab-194, G-194, F-194, Eb-194, D-194, C-194, Bb-195, Ab-195, G-195, F-195, Eb-195, D-195, C-195, Bb-196, Ab-196, G-196, F-196, Eb-196, D-196, C-196, Bb-197, Ab-197, G-197, F-197, Eb-197, D-197, C-197, Bb-198, Ab-198, G-198, F-198, Eb-198, D-198, C-198, Bb-199, Ab-199, G-199, F-199, Eb-199, D-199, C-199, Bb-200, Ab-200, G-200, F-200, Eb-200, D-200, C-200, Bb-201, Ab-201, G-201, F-201, Eb-201, D-201, C-201, Bb-202, Ab-202, G-202, F-202, Eb-202, D-202, C-202, Bb-203, Ab-203, G-203, F-203, Eb-203, D-203, C-203, Bb-204, Ab-204, G-204, F-204, Eb-204, D-204, C-204, Bb-205, Ab-205, G-205, F-205, Eb-205, D-205, C-205, Bb-206, Ab-206, G-206, F-206, Eb-206, D-206, C-206, Bb-207, Ab-207, G-207, F-207, Eb-207, D-207, C-207, Bb-208, Ab-208, G-208, F-208, Eb-208, D-208, C-208, Bb-209, Ab-209, G-209, F-209, Eb-209, D-209, C-209, Bb-210, Ab-210, G-210, F-210, Eb-210, D-210, C-210, Bb-211, Ab-211, G-211, F-211, Eb-211, D-211, C-211, Bb-212, Ab-212, G-212, F-212, Eb-212, D-212, C-212, Bb-213, Ab-213, G-213, F-213, Eb-213, D-213, C-213, Bb-214, Ab-214, G-214, F-214, Eb-214, D-214, C-214, Bb-215, Ab-215, G-215, F-215, Eb-215, D-215, C-215, Bb-216, Ab-216, G-216, F-216, Eb-216, D-216, C-216, Bb-217, Ab-217, G-217, F-217, Eb-217, D-217, C-217, Bb-218, Ab-218, G-218, F-218, Eb-218, D-218, C-218, Bb-219, Ab-219, G-219, F-219, Eb-219, D-219, C-219, Bb-220, Ab-220, G-220, F-220, Eb-220, D-220, C-220, Bb-221, Ab-221, G-221, F-221, Eb-221, D-221, C-221, Bb-222, Ab-222, G-222, F-222, Eb-222, D-222, C-222, Bb-223, Ab-223, G-223, F-223, Eb-223, D-223, C-223, Bb-224, Ab-224, G-224, F-224, Eb-224, D-224, C-224, Bb-225, Ab-225, G-225, F-225, Eb-225, D-225, C-225, Bb-226, Ab-226, G-226, F-226, Eb-226, D-226, C-226, Bb-227, Ab-227, G-227, F-227, Eb-227, D-227, C-227, Bb-228, Ab-228, G-228, F-228, Eb-228, D-228, C-228, Bb-229, Ab-229, G-229, F-229, Eb-229, D-229, C-229, Bb-230, Ab-230, G-230, F-230, Eb-230, D-230, C-230, Bb-231, Ab-231, G-231, F-231, Eb-231, D-231, C-231, Bb-232, Ab-232, G-232, F-232, Eb-232, D-232, C-232, Bb-233, Ab-233, G-233, F-233, Eb-233, D-233, C-233, Bb-234, Ab-234, G-234, F-234, Eb-234, D-234, C-234, Bb-235, Ab-235, G-235, F-235, Eb-235, D-235, C-235, Bb-236, Ab-236, G-236, F-236, Eb-236, D-236, C-236, Bb-237, Ab-237, G-237, F-237, Eb-237, D-237, C-237, Bb-238, Ab-238, G-238, F-238, Eb-238, D-238, C-238, Bb-239, Ab-239, G-239, F-239, Eb-239, D-239, C-239, Bb-240, Ab-240, G-240, F-240, Eb-240, D-240, C-240, Bb-241, Ab-241, G-241, F-241, Eb-241, D-241, C-241, Bb-242, Ab-242, G-242, F-242, Eb-242, D-242, C-242, Bb-243, Ab-243, G-243, F-243, Eb-243, D-243, C-243, Bb-244, Ab-244, G-244, F-244, Eb-244, D-244, C-244, Bb-245, Ab-245, G-245, F-245, Eb-245, D-245, C-245, Bb-246, Ab-246, G-246, F-246, Eb-246, D-246, C-246, Bb-247, Ab-247, G-247, F-247, Eb-247, D-247, C-247, Bb-248, Ab-248, G-248, F-248, Eb-248, D-248, C-248, Bb-249, Ab-249, G-249, F-249, Eb-249, D-249, C-249, Bb-250, Ab-250, G-250, F-250, Eb-250, D-250, C-250, Bb-251, Ab-251, G-251, F-251, Eb-251, D-251, C-251, Bb-252, Ab-252, G-252, F-252, Eb-252, D-252, C-252, Bb-253, Ab-253, G-253, F-253, Eb-253, D-253, C-253, Bb-254, Ab-254, G-254, F-254, Eb-254, D-254, C-254, Bb-255, Ab-255, G-255, F-255, Eb-255, D-255, C-255, Bb-256, Ab-256, G-256, F-256, Eb-256, D-256, C-256, Bb-257, Ab-257, G-257, F-257, Eb-257, D-257, C-257, Bb-258, Ab-258, G-258, F-258, Eb-258, D-258, C-258, Bb-259, Ab-259, G-259, F-259, Eb-259, D-259, C-259, Bb-260, Ab-260, G-260, F-260, Eb-260, D-260, C-260, Bb-261, Ab-261, G-261, F-261, Eb-261, D-261, C-261, Bb-262, Ab-262, G-262, F-262, Eb-262, D-262, C-262, Bb-263, Ab-263, G-263, F-263, Eb-263, D-263, C-263, Bb-264, Ab-264, G-264, F-264, Eb-264, D-264, C-264, Bb-265, Ab-265, G-265, F-265, Eb-265, D-265, C-265, Bb-266, Ab-266, G-266, F-266, Eb-266, D-266, C-266, Bb-267, Ab-267, G-267, F-267, Eb-267, D-267, C-267, Bb-268, Ab-268, G-268, F-268, Eb-268, D-268, C-268, Bb-269, Ab-269, G-269, F-269, Eb-269, D-269, C-269, Bb-270, Ab-270, G-270, F-270, Eb-270, D-270, C-270, Bb-271, Ab-271, G-271, F-271, Eb-271, D-271, C-271, Bb-272, Ab-272, G-272, F-272, Eb-272, D-272, C-272, Bb-273, Ab-273, G-273, F-273, Eb-273, D-273, C-273, Bb-274, Ab-274, G-274, F-274, Eb-274, D-274, C-274, Bb-275, Ab-275, G-275, F-275, Eb-275, D-275, C-275, Bb-276, Ab-276, G-276, F-276, Eb-276, D-276, C-276, Bb-277, Ab-277, G-277, F-277, Eb-277, D-277, C-277, Bb-278, Ab-278, G-278, F-278, Eb-278, D-278, C-278, Bb-279, Ab-279, G-279, F-279, Eb-279, D-279, C-279, Bb-280, Ab-280, G-280, F-280, Eb-280, D-280, C-280, Bb-281, Ab-281, G-281, F-281, Eb-281, D-281, C-281, Bb-282, Ab-282, G-282, F-282, Eb-282, D-282, C-282, Bb-283, Ab-283, G-283, F-283, Eb-283, D-283, C-283, Bb-284, Ab-284, G-284, F-284, Eb-284, D-284, C-284, Bb-285, Ab-285, G-285, F-285, Eb-285, D-285, C-285, Bb-286, Ab-286, G-286, F-286, Eb-286, D-286, C-286, Bb-287, Ab-287, G-287, F-287, Eb-287, D-287, C-287, Bb-288, Ab-288, G-288, F-288, Eb-288, D-288, C-288, Bb-289, Ab-289, G-289, F-289, Eb-289, D-289, C-289, Bb-290, Ab-290, G-290, F-290, Eb-290, D-290, C-290, Bb-291, Ab-291, G-291, F-291, Eb-291, D-291, C-291, Bb

# MBDA 9-10 Honor Band Horn Scales

## Ab Major



## G Major



## Chromatic



# MBDA 9-10 Honor Band Trumpet Scales

A Major



A $\flat$  Major



Chromatic



# MBDA 9-10 Honor Band Trombone/Euphonium Scales

G Major



A $\flat$  Major



Chromatic



optional



# MBDA 9-10 Honor Band Euphonium TC Scales

A Major



Bb Major



Chromatic



optional



# MBDA 9-10 Honor Band Tuba Scales

♩ = 120

F Major

Musical notation for the F Major scale in bass clef, 4/4 time. The scale consists of 12 notes: F, G, A, Bb, C, D, E, F, G, A, Bb, C. The notation includes a treble clef, a key signature of one flat, and a 4/4 time signature. The scale is written in a single line of music with a double bar line at the end.

A Major

Musical notation for the A Major scale in bass clef, 4/4 time. The scale consists of 12 notes: A, B, C, D, E, F#, G, A, B, C, D, E. The notation includes a treble clef, a key signature of three sharps, and a 4/4 time signature. The scale is written in a single line of music with a double bar line at the end.

Musical notation for the A Major scale in bass clef, 4/4 time. This is a continuation of the previous scale, starting on the second line of the staff (F#) and ending on the second space (E). The notation includes a treble clef, a key signature of three sharps, and a 4/4 time signature. The scale is written in a single line of music with a double bar line at the end.

Chromatic

Musical notation for the Chromatic scale in bass clef, 4/4 time. The scale consists of 24 notes: F, F#, G, G#, A, A#, B, Bb, B#, C, C#, D, Db, D#, E, Eb, E#, F. The notation includes a treble clef, a key signature of one flat, and a 4/4 time signature. The scale is written in a single line of music with a double bar line at the end.

Musical notation for the Chromatic scale in bass clef, 4/4 time. This is a continuation of the previous scale, starting on the second line of the staff (F#) and ending on the second space (E). The notation includes a treble clef, a key signature of one flat, and a 4/4 time signature. The scale is written in a single line of music with a double bar line at the end.

# MBDA 9-10 Honor Band Mallet Scales

♩ = 120

A

A musical staff in treble clef with a key signature of two sharps (F# and C#) and a 4/4 time signature. The scale starts on A4 and follows the sequence: A4, B4, C#5, D5, E5, F#5, G5, A5, G5, F#5, E5, D5, C#5, B4, A4. The piece concludes with a fermata over the final A4 note.

Db

A musical staff in treble clef with a key signature of three flats (Bb, Eb, and Ab) and a 4/4 time signature. The scale starts on Db4 and follows the sequence: Db4, Eb4, Fb4, Gb4, Ab4, Bb4, C5, Bb4, Ab4, Gb4, Fb4, Eb4, Db4. The piece concludes with a fermata over the final Db4 note.

Chromatic

A musical staff in treble clef with a 4/4 time signature. The scale starts on C4 and follows the sequence: C4, C#4, D4, D#4, E4, E#4, F4, F#4, G4, G#4, A4, A#4, B4, B#4, C5. The piece concludes with a fermata over the final C5 note.

A musical staff in treble clef with a 4/4 time signature. The scale starts on C5 and follows the sequence: C5, B4, Bb4, Ab4, Gb4, Fb4, Eb4, Db4, C4, B3, Ab3, Gb3, Fb3, Eb3, Db3, C3. The piece concludes with a fermata over the final C3 note.

